

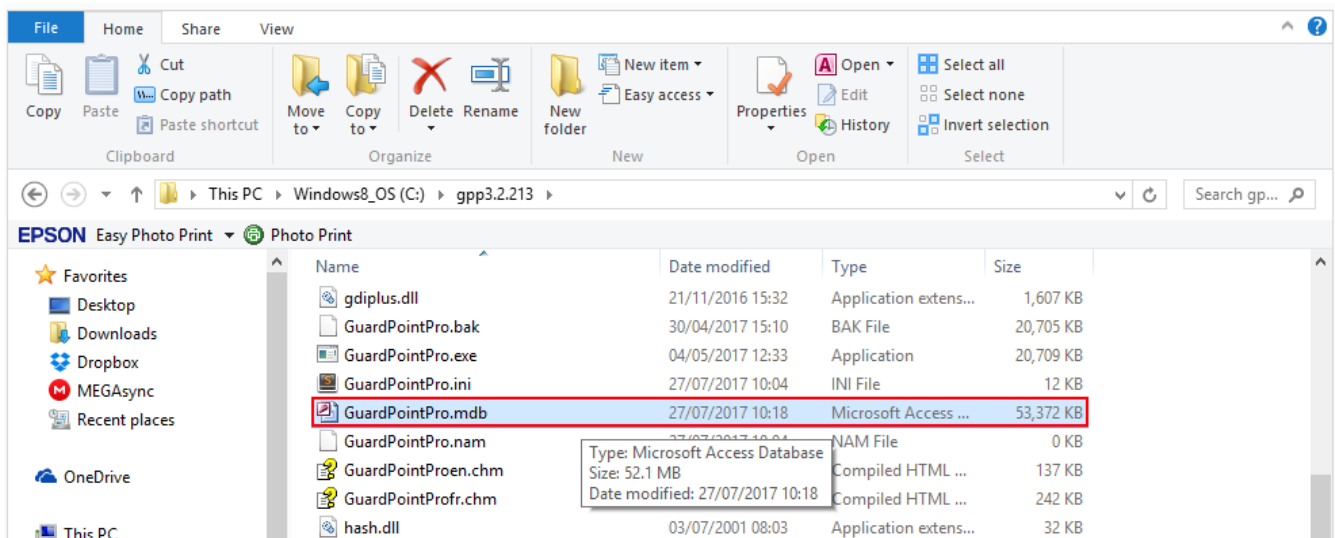
GPP - How to fix slow loading GPP

Occasionally you may notice that GuardPointPro is slow to load when running on a Microsoft Access Database. This is caused by a table in the Access database called MEMNUM containing many pending commands that have already been sent to the controllers.

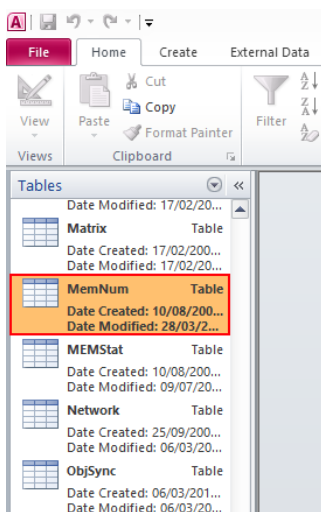
We can fix this problem by running an SQL statement to delete the sent pending commands.

NOTE: You will require Microsoft Access to open and run the SQL query on the GuardPointPro.mdb

1. Open the GuardPointPro installation folder and locate The GuardPointPro.mdb file

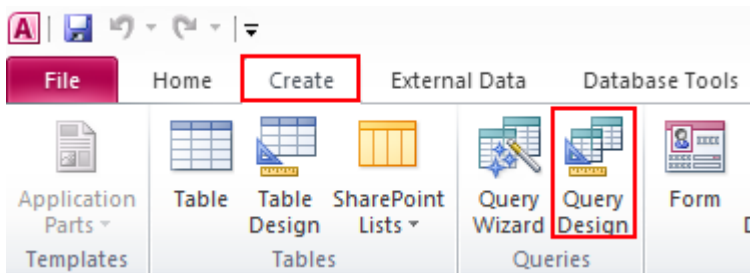


2. Double click the GuardPointPro.mdb to open in MS access.
3. Once open you will see all the database tables associated with the GuardPointPro database, scroll down the table list until you find the table named MEMNUM.

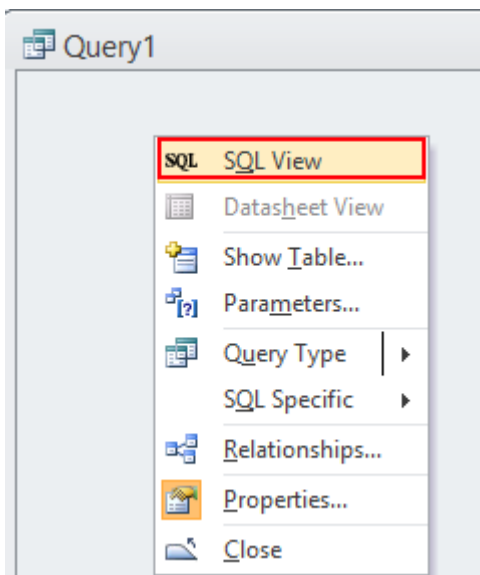


GPP - How to fix slow loading GPP

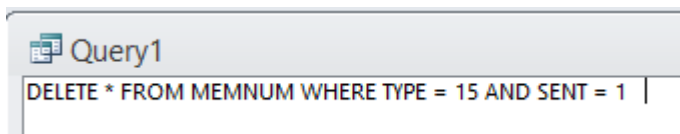
4. Double click the MEMNUM table, the table will open.
5. With the MEMNUM table open click on to the Create menu then click on to Query Design, this will open the query window and the Show table window, close the show table window



6. Right click into the Query window and select SQL view

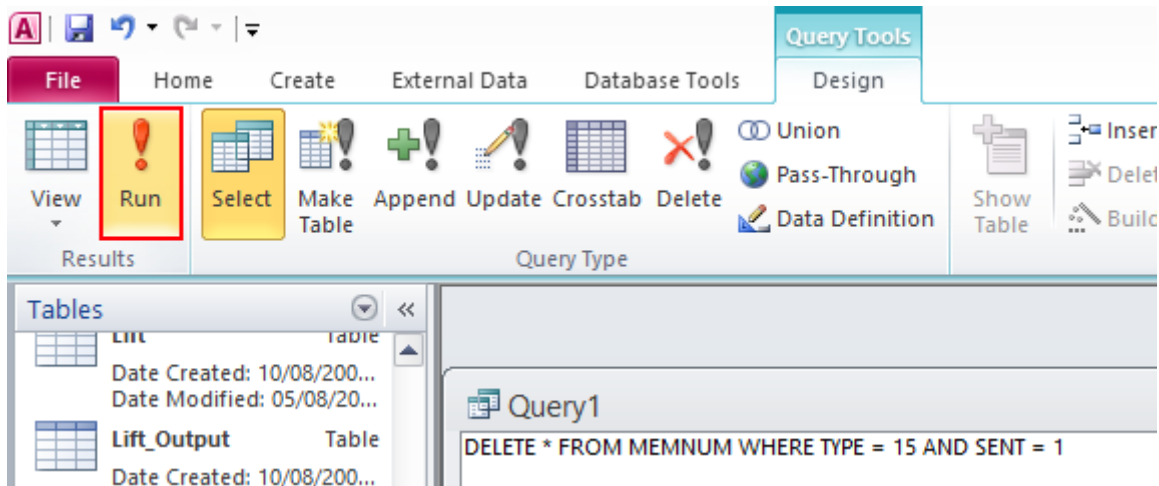


7. Click into the query window. Copy and paste this SQL stamen into the window
DELETE * FROM MEMNUM WHERE TYPE = 15 AND SENT = 1



GPP - How to fix a slow loading GPP

8. Click the Run button, this will run the SQL query



9. You will receive a confirmation that you are about to delete X amount of records, confirm this action. This will delete all pending related to cardholder definitions that have a "sent" status of 1 (already sent)

Once done, open the MEMNUM table and check that the delete command has worked, you should now have far less entries in the MENU table than when you started.

Save and close the DB then launch GPP and check that loading time is as expected