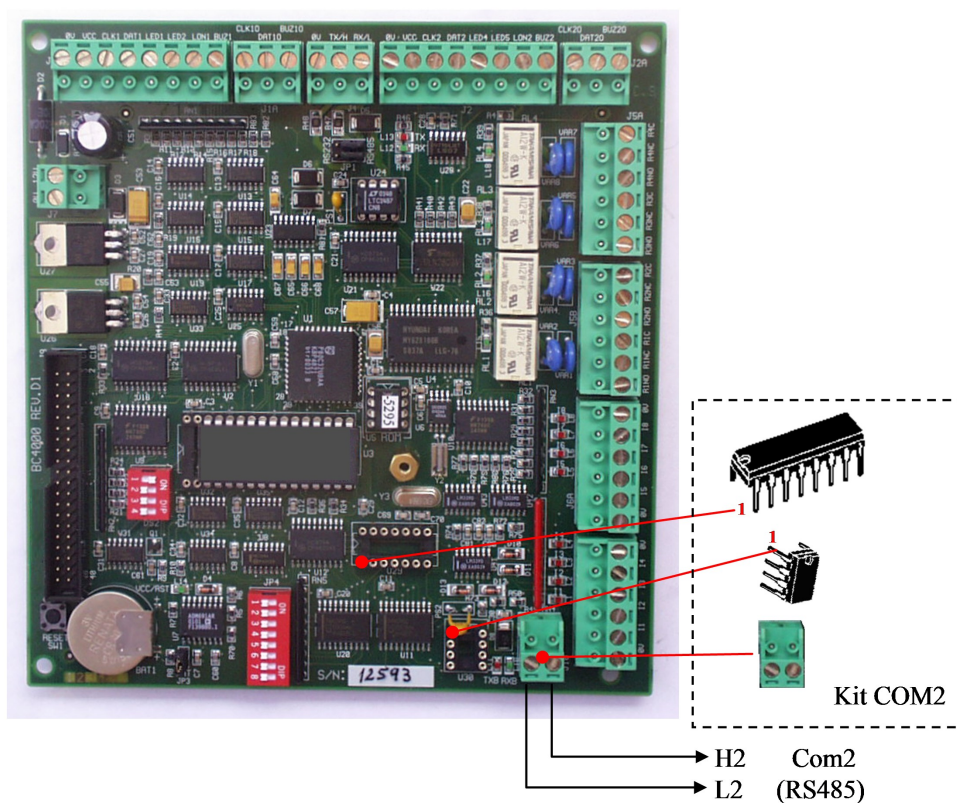


## Kit COM2 FOR IC CONTROLLER—RCB

The Kit COM2 is composed by components to install on a IC controller board Rev. D1 to form a second serial com port which can be used to connect a redundant bus to the PC or to connect satellites, etc.



The Kit Com2 is composed by :

- A 16 pins Ic (UART)
- A 8 pins Ic (RS485 buffer)
- A 2 pins connector to install on the IC

### Installation instructions:

1. Disconnect the power from the controller.
  2. Insert the 2 Ics. Warning : Pin 1 must be installed as shown on the drawing.
  3. Power-up the controller.
  4. Connect the items (satellites, PC, etc...) on the second RS485 Com2 bus by respecting the same rules as for the main bus. (See IC Installation Manual).
- Never connect the 2 RS485 buses together.