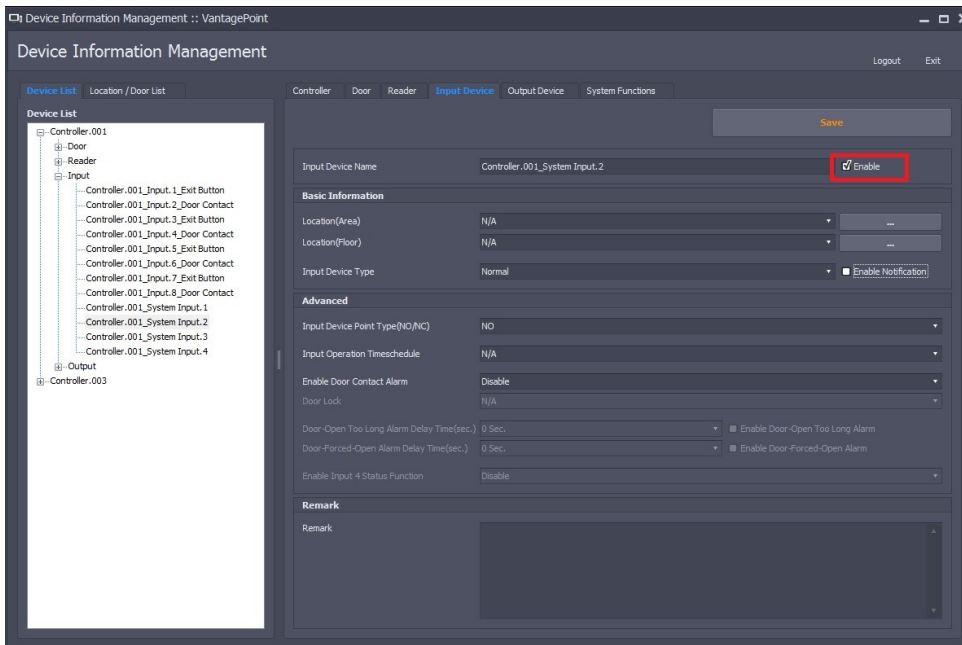


Activating Doors from an Input -

To lock or unlock door from an input.

1. First Enable the input



Device Information Management :: VantagePoint

Device Information Management

Controller Door Reader **Input Device** Output Device System Functions

Save

Input Device Name: Controller.001_System Input.2 ☒ Enable

Basic Information

Location(Area): N/A
Location(Floor): N/A
Input Device Type: Normal ☐ Enable Notification

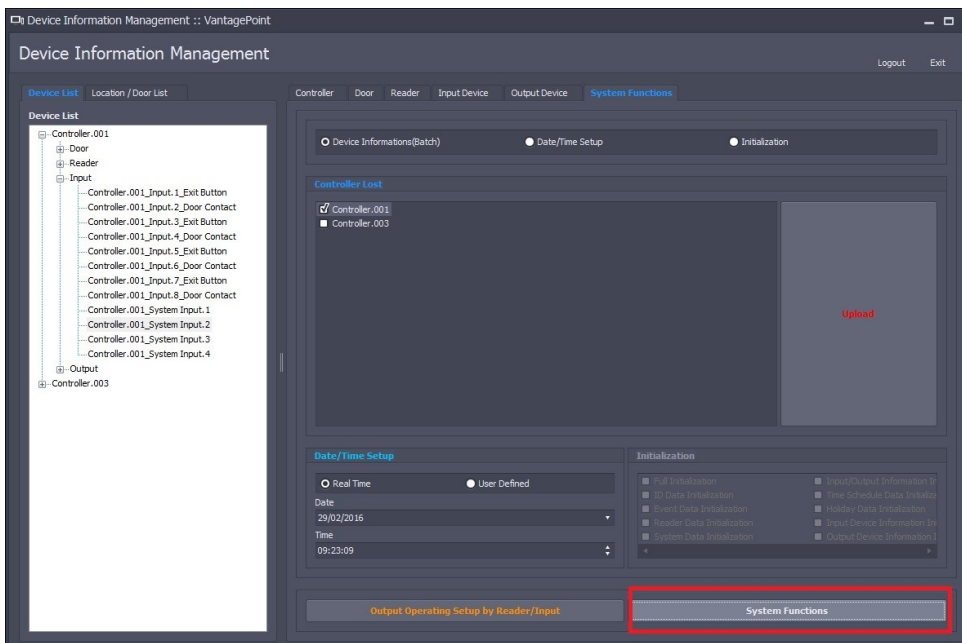
Advanced

Input Device Point Type(NO/NC): NO
Input Operation Timeschedule: N/A
Enable Door Contact Alarm: Disable
Door Lock: N/A
Door-Open Too Long Alarm Delay Time(sec.): 0 Sec. ☐ Enable Door-Open Too Long Alarm
Door-Forced-Open Alarm Delay Time(sec.): 0 Sec. ☐ Enable Door-Forced-Open Alarm
Enable Input 4 Status Function: Disable

Remark

Remark:

2. Go to the system Functions tab



Device Information Management :: VantagePoint

Device Information Management

Controller Door Reader Input Device Output Device **System Functions**

Device Informations(Batch) Date/Time Setup Initialization

Controller List

☒ Controller.001
☐ Controller.003

Date/Time Setup

☐ Real Time ☒ User Defined
Date: 29/02/2016
Time: 09:23:09

Initialization

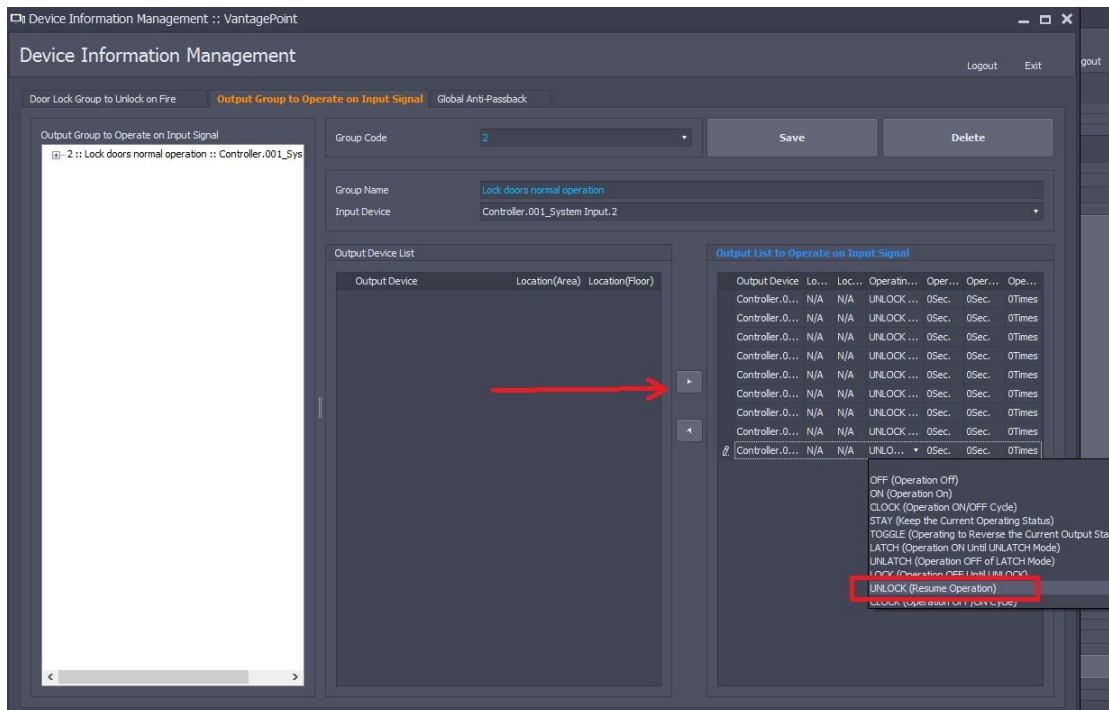
☐ Full Initialization
☐ IO Data Initialization
☐ Event Data Initialization
☐ Reader Data Initialization
☐ System Data Initialization
☐ Input/Output Information Is
☐ Time Schedule Data Initialia
☐ Holiday Data Initialization
☐ Input Device Information Is
☐ Output Device Information Is

Output Operating Setup by Reader/Input

System Functions

Activating Doors from an Input -

3. Click on the system functions tab and open the device information management.



4. Click on the the tab "output group to operate on input signal"

Assign a group code and give it your own group name. search and select the input device (the input you enabled).

In the two boxes below move the desired outputs from the left to the right column using the arrow buttons. Click on the operation mode and choose your desired action.

I have chosen unlock - Resume operation as this puts the outputs back into their normal operational mode